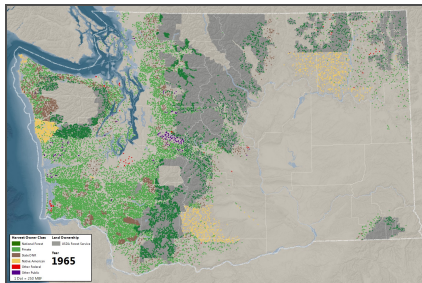


# Summarized Washington DNR Timber Harvest Reports



## Tags

wa, timber, harvest

## Summary

This project was developed as a way to visualize changes in timber harvests (both volumes and locations) over time in Washington State.

## Description

This project was developed as a way to visualize changes in timber harvests (both volumes and locations) over time in Washington State.

Historical timber harvest volume data is available from the Washington State Department of Natural Resources (DNR), but harvest locations are not. As a proxy for timber harvest locations ownership data from two recent projects was used to create a visual representation of where and how intensely timber was harvested from 1965 to 2013.

## Credits

Andrew Cooke, Luke Rogers, Natural Resources Spatial Informatics Group, University of Washington School of Environmental and Forest Sciences.

## Use limitations

There are no access and use limitations for this item.

## Extent

There is no extent for this item.

## Scale Range

**Maximum (zoomed in)** 1:50,000

**Minimum (zoomed out)** 1:20,000,000

## ArcGIS Metadata ►

### Topics and Keywords ►

THEMES OR CATEGORIES OF THE RESOURCE [environment](#)

\* CONTENT TYPE [Downloadable Data](#)

[EXPORT TO FGDC CSDGM XML FORMAT AS RESOURCE DESCRIPTION](#) [No](#)

[Hide Topics and Keywords ▲](#)

## Citation ►

TITLE Summarized Washington DNR Timber Harvest Reports  
CREATION DATE 2015-08-31 00:00:00  
PUBLICATION DATE 2015-08-31 00:00:00

PRESENTATION FORMATS \* digital table

[Hide Citation ▲](#)

## Citation Contacts ►

### RESPONSIBLE PARTY

INDIVIDUAL'S NAME Luke Rogers  
ORGANIZATION'S NAME University of Washington School of Environmental and Forest Sciences  
CONTACT'S POSITION Research Scientist  
CONTACT'S ROLE principal investigator

### RESPONSIBLE PARTY

INDIVIDUAL'S NAME Andrew Cooke  
ORGANIZATION'S NAME University of Washington School of Environmental and Forest Sciences  
CONTACT'S POSITION Research Scientist  
CONTACT'S ROLE point of contact

[Hide Citation Contacts ▲](#)

## Resource Details ►

DATASET LANGUAGES \* English (UNITED STATES)  
DATASET CHARACTER SET utf8 - 8 bit UCS Transfer Format

SPATIAL REPRESENTATION TYPE \* text table

\* PROCESSING ENVIRONMENT Version 6.2 (Build 9200) ; Esri ArcGIS 10.3.1.4959

### CREDITS

Andrew Cooke, Luke Rogers, Natural Resources Spatial Informatics Group, University of Washington School of Environmental and Forest Sciences.

### ARCGIS ITEM PROPERTIES

\* NAME atlas.dbo.DNR\_TimberHarvestReports\_DelucaSummarized  
\* LOCATION Server=DBH; Service=sde:sqlserver:DBH; Database=atlas; Version=dbo.DEFAULT  
\* ACCESS PROTOCOL ArcSDE Connection

[Hide Resource Details ▲](#)

## Resource Points of Contact ►

### POINT OF CONTACT

INDIVIDUAL'S NAME Luke Rogers  
ORGANIZATION'S NAME University of Washington School of Environmental and Forest Sciences  
CONTACT'S POSITION Research Scientist  
CONTACT'S ROLE principal investigator

### POINT OF CONTACT

INDIVIDUAL'S NAME Andrew Cooke

ORGANIZATION'S NAME University of Washington School of Environmental and Forest Sciences  
CONTACT'S POSITION Research Scientist  
CONTACT'S ROLE point of contact

[Hide Resource Points of Contact ▲](#)

## Resource Maintenance ►

RESOURCE MAINTENANCE  
UPDATE FREQUENCY not planned

[Hide Resource Maintenance ▲](#)

## Fields ►

DETAILS FOR OBJECT atlas.dbo.DNR\_TimberHarvestReports\_DelucaSummarized ►

\* TYPE Table  
\* ROW COUNT 9694

DEFINITION  
NA

DEFINITION SOURCE  
NA

FIELD Year ►

\* ALIAS Year  
\* DATA TYPE SmallInteger  
\* WIDTH 2  
\* PRECISION 5  
\* SCALE 0

FIELD DESCRIPTION  
Year of harvest

DESCRIPTION SOURCE  
NA

BEGINNING DATE OF VALUES 1965-01-01  
ENDING DATE OF VALUES 2013-12-31

MEASUREMENT FREQUENCY annually

[Hide Field Year ▲](#)

FIELD CountyID ►

ALIAS County ID  
\* DATA TYPE SmallInteger  
\* WIDTH 2  
\* PRECISION 5  
\* SCALE 0

FIELD DESCRIPTION  
County ID number

RANGE OF VALUES  
MINIMUM VALUE 1

MAXIMUM VALUE 39

[Hide Field CountyID ▲](#)

FIELD [CountyName ▶](#)

ALIAS County Name

\* DATA TYPE String

\* WIDTH 25

\* PRECISION 0

\* SCALE 0

FIELD DESCRIPTION

County name

DESCRIPTION SOURCE

NA

[Hide Field CountyName ▲](#)

FIELD [OwnerClassName ▶](#)

ALIAS Owner Class Name

\* DATA TYPE String

\* WIDTH 15

\* PRECISION 0

\* SCALE 0

FIELD DESCRIPTION

Owner class name

DESCRIPTION SOURCE

NA

[Hide Field OwnerClassName ▲](#)

FIELD [MBF\\_Total ▶](#)

ALIAS TotalIMBF

\* DATA TYPE Integer

\* WIDTH 4

\* PRECISION 10

\* SCALE 0

FIELD DESCRIPTION

Thousand board feet (MBF) of timber reported as sold to the Washington Department of Revenue

DESCRIPTION SOURCE

NA

[Hide Field MBF\\_Total ▲](#)

FIELD [OwnerClassID ▶](#)

ALIAS Owner Class ID

\* DATA TYPE SmallInteger

\* WIDTH 2

\* PRECISION 5

\* SCALE 0

FIELD DESCRIPTION

Owner class ID for joining to other tables

DESCRIPTION SOURCE

NA

[Hide Field OwnerClassID ▲](#)

[Hide Details for object atlas.dbo.DNR\\_TimberHarvestReports\\_DelucaSummarized ▲](#)

[Hide Fields ▲](#)

## Metadata Details ►

- \* METADATA LANGUAGE English (UNITED STATES)
- \* METADATA CHARACTER SET utf8 - 8 bit UCS Transfer Format

SCOPE OF THE DATA DESCRIBED BY THE METADATA \* non-geographic dataset

SCOPE NAME \* dataset

\* LAST UPDATE 2015-09-01

ARCGIS METADATA PROPERTIES

METADATA FORMAT ArcGIS 1.0

METADATA STYLE ISO 19139 Metadata Implementation Specification

STANDARD OR PROFILE USED TO EDIT METADATA ISO19139

CREATED IN ARCGIS FOR THE ITEM 2015-08-31 14:49:14

LAST MODIFIED IN ARCGIS FOR THE ITEM 2015-09-01 15:59:46

AUTOMATIC UPDATES

HAVE BEEN PERFORMED Yes

LAST UPDATE 2015-09-01 15:53:53

[Hide Metadata Details ▲](#)

## Metadata Contacts ►

METADATA CONTACT

INDIVIDUAL'S NAME Luke Rogers

ORGANIZATION'S NAME University of Washington School of Environmental and Forest Sciences

CONTACT'S POSITION Research Scientist

CONTACT'S ROLE principal investigator

[Hide Metadata Contacts ▲](#)

## Metadata Maintenance ►

MAINTENANCE

UPDATE FREQUENCY not planned

[Hide Metadata Maintenance ▲](#)

## Thumbnail and Enclosures ►

THUMBNAIL

THUMBNAIL TYPE    JPG

*Hide Thumbnail and Enclosures ▲*

**FGDC Metadata (read-only) ▼**